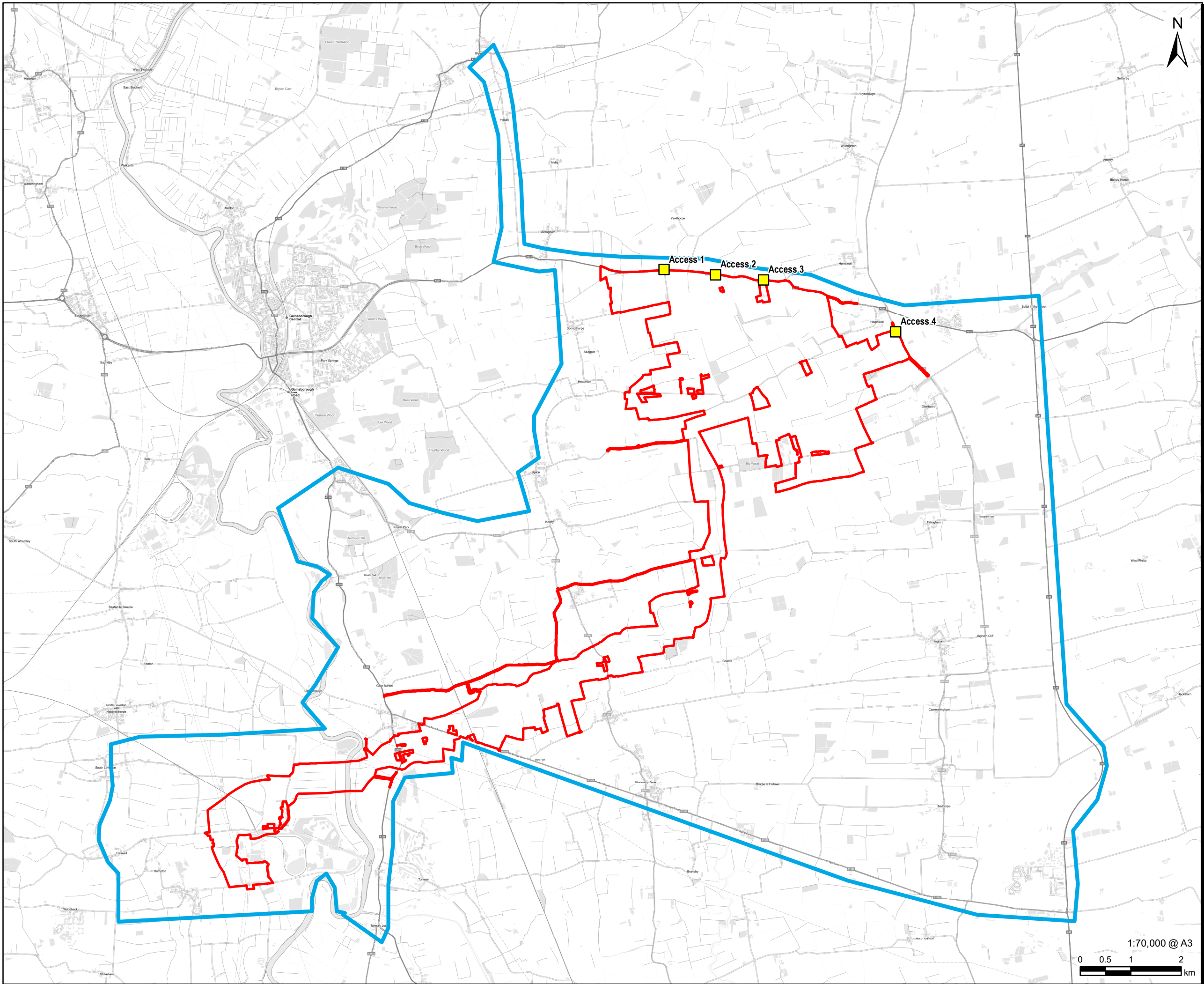


Revision: 0 Drawn: LL Checked: OR Approved: ST Date: 2023-03-22
Filename: i:\na.aecomnet.com\fs\EMEALondon-UK\ON06Legacy\UK\ON06PPFSW001\1\1\DP\Library\GIS_DATA\Projects\Greta III\Layout\Tillbridge Solar\Chapter 15 - Transport\Tillbridge Solar\Figure 15-1_Transport and Access Study Area.mxd



AECOM
PROJECT
Tillbridge Solar

CLIENT
Tillbridge Solar Ltd

CONSULTANT
Aldgate Tower
2, Leman Street
London, E1 8FA
United Kingdom
T +44-0207-645-2000

LEGEND
[Red outline] Scheme Boundary
[Yellow square] Potential Site Accesses for the Principal Site
[Blue outline] Transport and Access Study Area

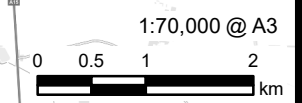
NOTES
Contains Ordnance Survey Data © Crown Copyright and database right 2022.
© Crown copyright and database rights 2022.
Ordnance Survey 0100031673.

ISSUE PURPOSE
PEI Report

PROJECT NUMBER
60677969

FIGURE TITLE
Transport and Access Study Area

FIGURE NUMBER
Figure 15-1



This drawing has been prepared for the use of AECOM's client. It may not be used, modified, reproduced or relied upon by third parties, except as agreed by AECOM or as required by law. AECOM accepts no responsibility, and denies any liability whatsoever, to any party that uses or relies on this drawing without AECOM's express written consent. Do not scale this document. All measurements must be obtained from the stated dimensions.